



BAPTISM CLASSES — If you are a new believer, a believer who hasn't been baptized or were baptized as an infant and want to declare your faith personally, we invite you to take our baptism classes that will prepare you for this spiritually forming event. Sundays during the 11 am service on February 3, 10 and 17. You need to attend all three classes in order to be baptized. Baptism will be February 17. And don't worry, it'll be indoors, not in Lake Phalen!
 Contact [Becky at bcote@whchurch.org](mailto:Becky@bcote@whchurch.org).

SOMA DISCIPLESHIP IMMERSION — SOMA is Woodland's 9-month intensive School Of Missional Apprenticeship. This school is for adults of all ages who want intensive discipleship, personal healing, dynamic theological formation, and ministry and urban missional equipping in a powerful community setting. The school is full-time and runs from September-May. We are now accepting applications for the fall of 2018.
 E-mail aspen@whchurch.org or go to whchurch.org/aspen.

HEROES GATE NEEDS YOU — We have openings for children's volunteers! During the 9am service we are looking for 1st, 2nd and 4th grade leaders. During the 11 am service we need help in preschool, 1st and 5th/6th grade. No experience necessary! Stop by the KIDS desk to get involved!
 Contact [Bethany at bblick@whchurch.org](mailto:Bethany@bblick@whchurch.org).

MEN'S BREAKFAST — Join us for breakfast and worship, February 2 at 8:30. Meet in South C (enter through the glass doors at the south end of the building facing The Plaza). Come for the sausage, stay for the good conversation!
 Contact [Rob at rkstler@whchurch.org](mailto:Rob@rkstler@whchurch.org).

INTO THE WOODS AT BETHEL — *Into the Woods* is playing at Bethel University, February 7 through 9 at 7:30pm and February 10 at 2:30pm. Purchase tickets at tickets.bethel.edu or call 651-638-6333.
 Contact [Meg at mzauner@bethel.edu](mailto:Meg@mzauner@bethel.edu).

WEDNESDAY TOGETHER THIS WEEK!

Join us this Wednesday, January 30 for an evening where all generations can take a break from the busyness of life and recharge. Bring your family and friends and join us as we fellowship and grow in our faith together.

KICK-OFF MEAL — Our first Wednesday Together Meal of the season will be from 5:30-6:30pm. We provide the food (suggested donation \$5 per person/\$20 per family). Just show up and enjoy.
 Contact [Becky at bcote@whchurch.org](mailto:Becky@bcote@whchurch.org).

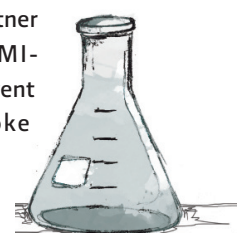
GROWTH GROUPS — Sermon discussion groups, begin at 6:30pm. This is a great way to connect with others while diving deeper into weekend sermons! Sign up online or at the Hello Desk.
 Contact [Shawna at sboren@whchurch.org](mailto:Shawna@sboren@whchurch.org).

CULTIVATE — Join us on Wednesday nights for classes designed to help you grow in your faith. Classes begin at 6:30pm. Find class descriptions and register to attend on our website or stop by the Hello Desk.
 Contact [Becky at bcote@whchurch.org](mailto:Becky@bcote@whchurch.org).

MISSIONARY TEACHER NEEDED — Teacher needed for small missionary community in Togo, West Africa (about 10 kids, grade K-6) starting Aug/Sep 2019 for at least a 1-yr commitment. Candidate would need to raise some support, and must apply through and be approved by the missions organization.
 Contact Tim or Huyen at Lefortone@hotmail.com.

FUNERAL LUNCH VOLUNTEERS NEEDED — If you like to serve others during a time of grief, one way to do that is to volunteer at funeral luncheons. Our team works to ensure a nice setting by decorating tables, making drinks, keeping food tables full and cleaning up. We can teach you everything if you want to join our team!
 Contact Susan at 651-487-3725.

THE TAP VALENTINE PARTY — Celebrate Valentine's Day with us on February 15 from 6-9pm! We're excited to partner with our friends at NAMI-Ramsey County for a free event including dancing, karaoke and more.
 Contact Michelle at michelle.aimservices@gmail.com



IN YOUR OWN WORDS

Thank you for last weekend's teaching on MLK and the message of Jesus. My favorite MLK quote: "the moral arc of the universe bends toward justice." Thanks for participating in the "bending."
 MERV, ON FACEBOOK



GIVING AND GENEROSITY

Together, we're changing lives in real ways! Thanks for your generosity and for helping us serve people so they can meet a Jesus-looking God and find the hope that only he can give.

HOW TO GIVE

Financial offerings can be given in person during the worship service (envelopes are provided by request at the Info Table in the Gathering Area), or online at: whchurch.org/online-giving.

LAST WEEK	
BUDGET	\$48,000
ACTUAL	\$49,154
THIS MONTH	
BUDGET	\$144,000
ACTUAL	\$137,971
FISCAL YEAR TO DATE	
BUDGET	\$1,700,000
ACTUAL	\$1,634,076

NOTE: Our fiscal year begins in July

WELCOME TO WOODLAND

ATTEND
 Our weekend services are a chance to learn, worship and build community.

SERVE
 Stop by the Hello Desk or visit whchurch.org/volunteer for more information about serving opportunities around this place.

GROUPS
 Grab a "Get Involved" brochure at the Hello Desk to learn about ministries and groups that meet during the week. You can always email us with any questions at info@whchurch.org.

GET THE RUNDOWN
 The Rundown is our email newsletter. Subscribe at whchurch.org/rundown.

KIDS
 On Sundays, HEROES GATE provides a safe place for children to learn to live and love like Jesus and make a difference in the world. (birth-6th grade)

YOUTH
 At ECHO, students find their identity and calling in God's story through teaching, discussions and experiences. See whchurch.org/echo for current calendar and event information. (7-12 grade)

YOUNG ADULTS
 If you're a young adult and looking for connection and community at WH, we'd love to hear from you! Just get in touch with Shawna at sboren@whchurch.org.



SERMON NOTES



HOW SCIENCE AND FAITH CAN GET ALONG JAN 26-27